



Radiology Deployment: TA Program

There is no doubt that technological advancements in healthcare are taking off, but there is still an alarming need and desire to find quality healthcare workers and clinicians. The need for skilled workers has reached epidemic proportions for many industries, but the healthcare space is at the epicenter of this workforce shortage.

internU has seen firsthand the need to marry technology offerings with human capital. This includes a health system's multi-vendor remote scanning software solution in the radiology department and the need to free up their Radiologic Technologists, so that they can help with more imaging and patient interaction.

Our Approach

For internU, we have been laser focused on providing a layer of assistance to Radiologic Technologists by hiring and deploying Radiology Tech Assistants (TAs) to our health system partners. These partners have been very pleased with the results of adding TAs, because it eliminates scheduling delays, patient cancellations and reduces on-site waiting times. Ultimately this allows more patients to be scheduled for exams, while preventing patient leakage due to rescheduled exams.

To date, we have been successful in collaborating with our higher education partners in this endeavor and we intend to continue fostering partnerships with organizations dedicated to supporting students from various backgrounds, including community colleges, charter schools, STEAM high schools, workforce development organizations and nonprofits, such as the Police Athletic League.

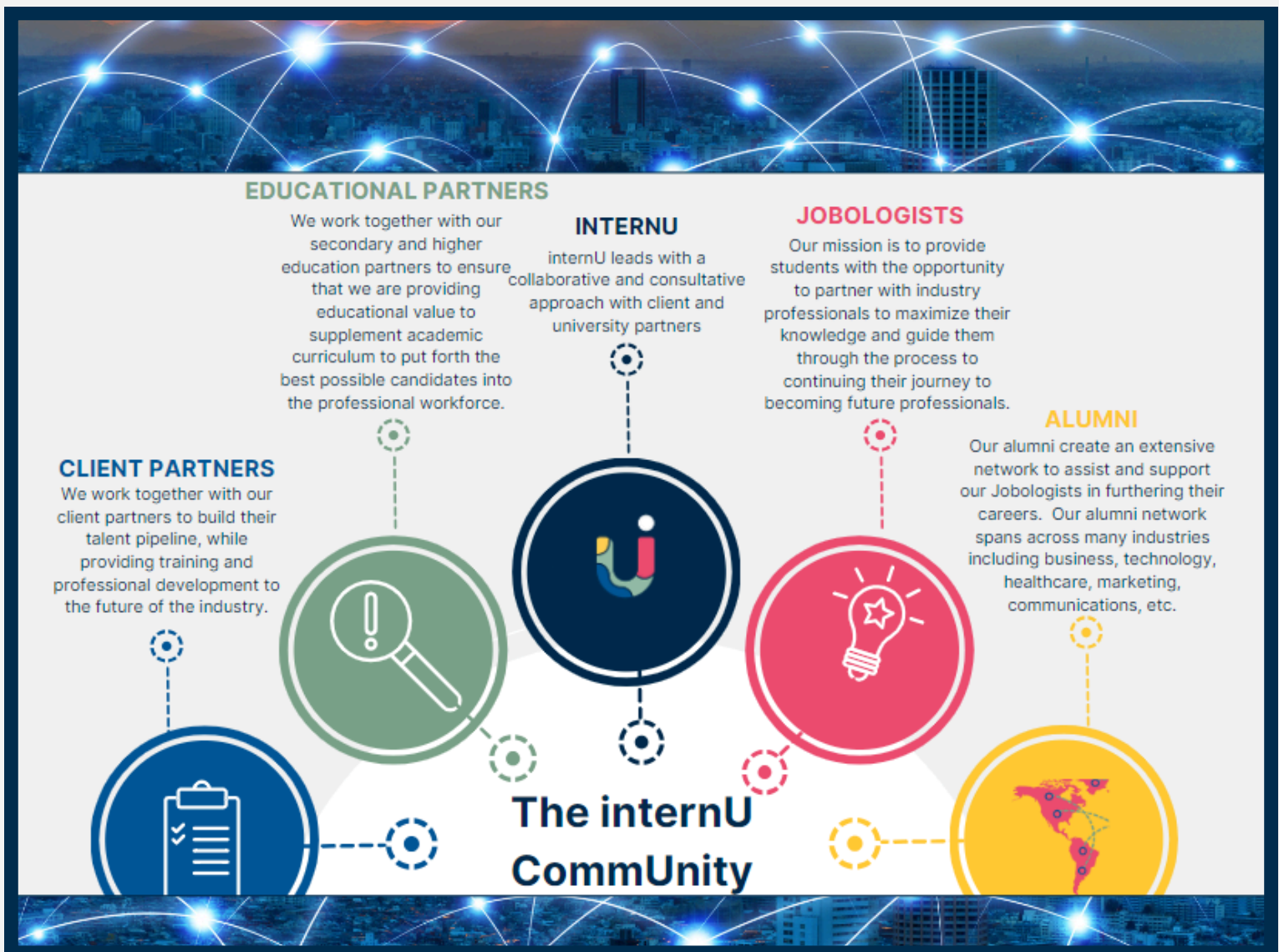
Collaborating closely with experienced Technologists, TA participants can ask questions, observe scans in real-time, and engage in a dynamic learning environment.





Radiology Deployment: TA Program

Leveraging our well-established internU ecosystem (see graph), we provide a robust support system for these students as they navigate their journey towards becoming professionals. Partnering with our higher education partners, we facilitate the admission of students into specialized programs tailored to their career goals, while additionally working closely with our existing healthcare partners to structure opportunities for gaining essential clinical hours. Through these strategic alliances, we strive to bridge the gap, creating pathways for success and fostering the growth of the next generation of healthcare professionals.





Radiology Deployment: TA Program



Jobologi Program

We optimize the education of our young professionals by building their professional and personal experiences through practical opportunities with our client partners and a program to gain insight on their career path and professionalism at no cost to them, which we coined Jobologi. In fact, they are even compensated for their time for every program attended. The programming includes:

- **Work experience with one of our partners**
- **Networking/Mentorship Event**
- **Team Building Event**
- **Professional Workshops**

TA Program Responsibilities

- Patient Prep and Screening
- Ensuring proper MRI safety precautions and procedures.
- Assists patients in department transfers when necessary.
- Maintains MRI room cleanliness and supplies to create a work environment that is clean, orderly, and safe for patients, visitors, students, and employees.
- Escorts patients to and from departments as needed.
- Maintains the confidentiality of patient information and uses discretion when interacting and communicating with patients.
- Assists technologists with patients when required.



Contact Us

- ☎ 484-588-5500
- 🌐 www.internu.com
- ✉ hms@internu.com
- 📍 304 East King Street, Malvern, PA, 19355